

ZUGA



OIR  
All-On-Four  
Digital Surgical Guide System

— A Zuga Innovation —



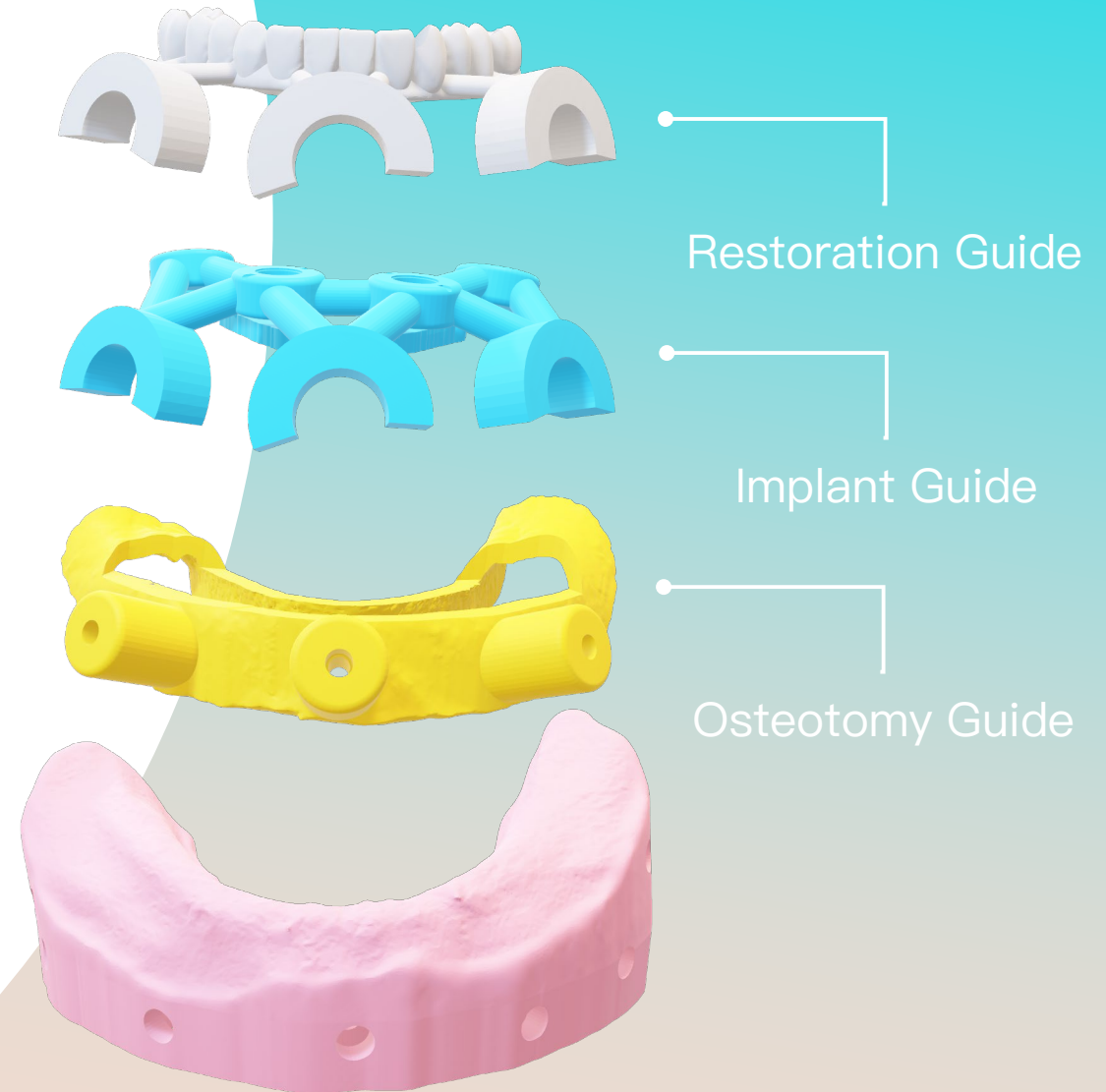
ZUGA MEDICAL

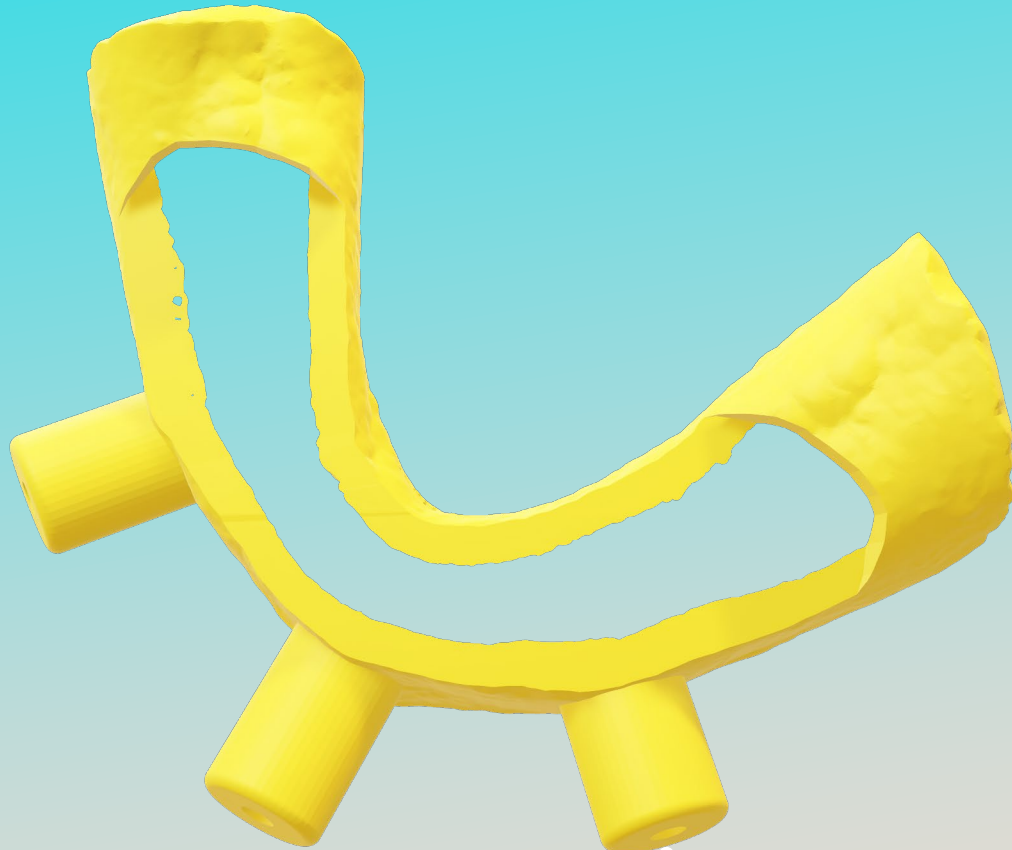
# Zuga's Patent Pending OIR System Digital Surgery Guide For All-On-Four Procedures

Osteotomy Guide

Implant Guide

Restoration Guide

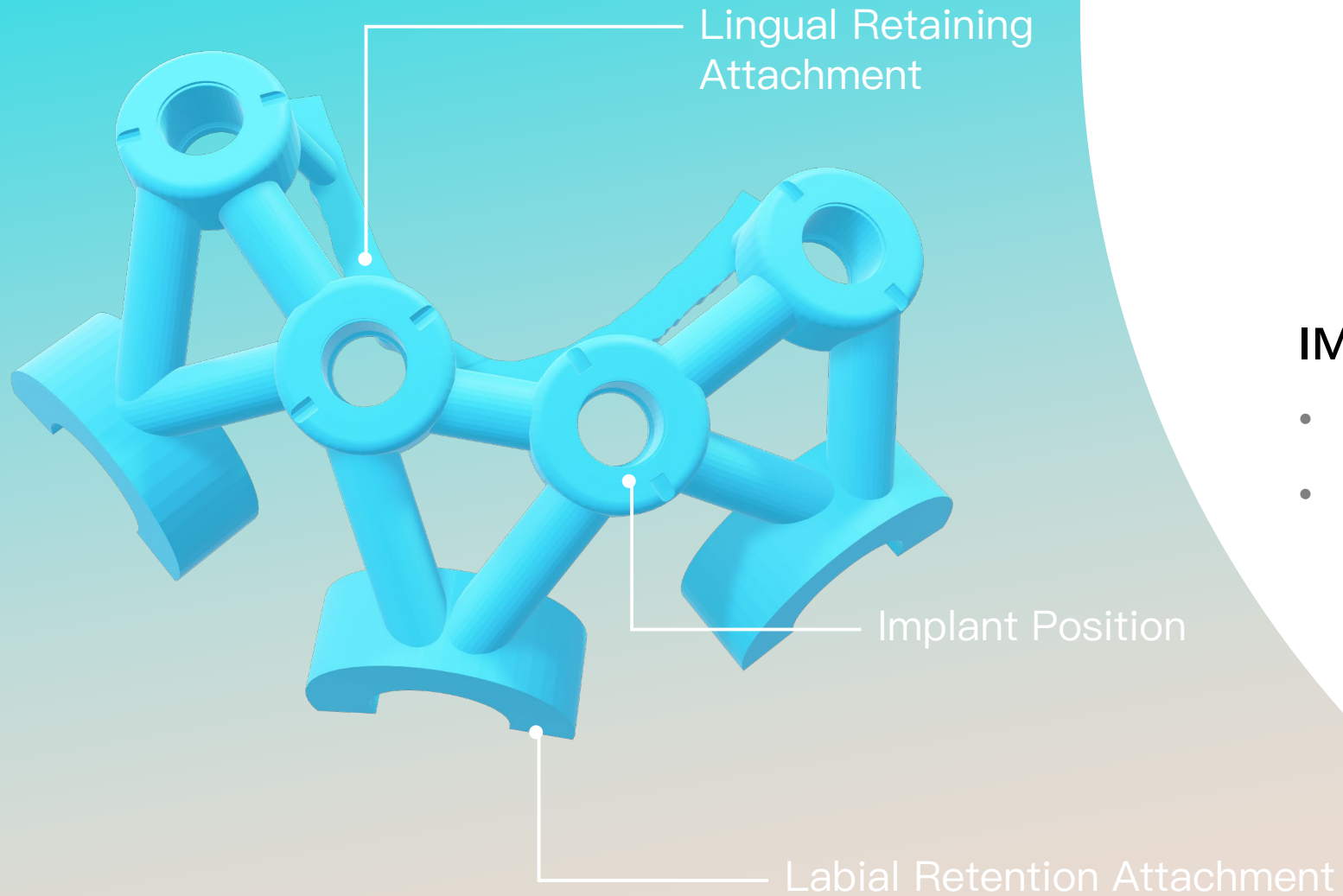




Anchor Pin Hole

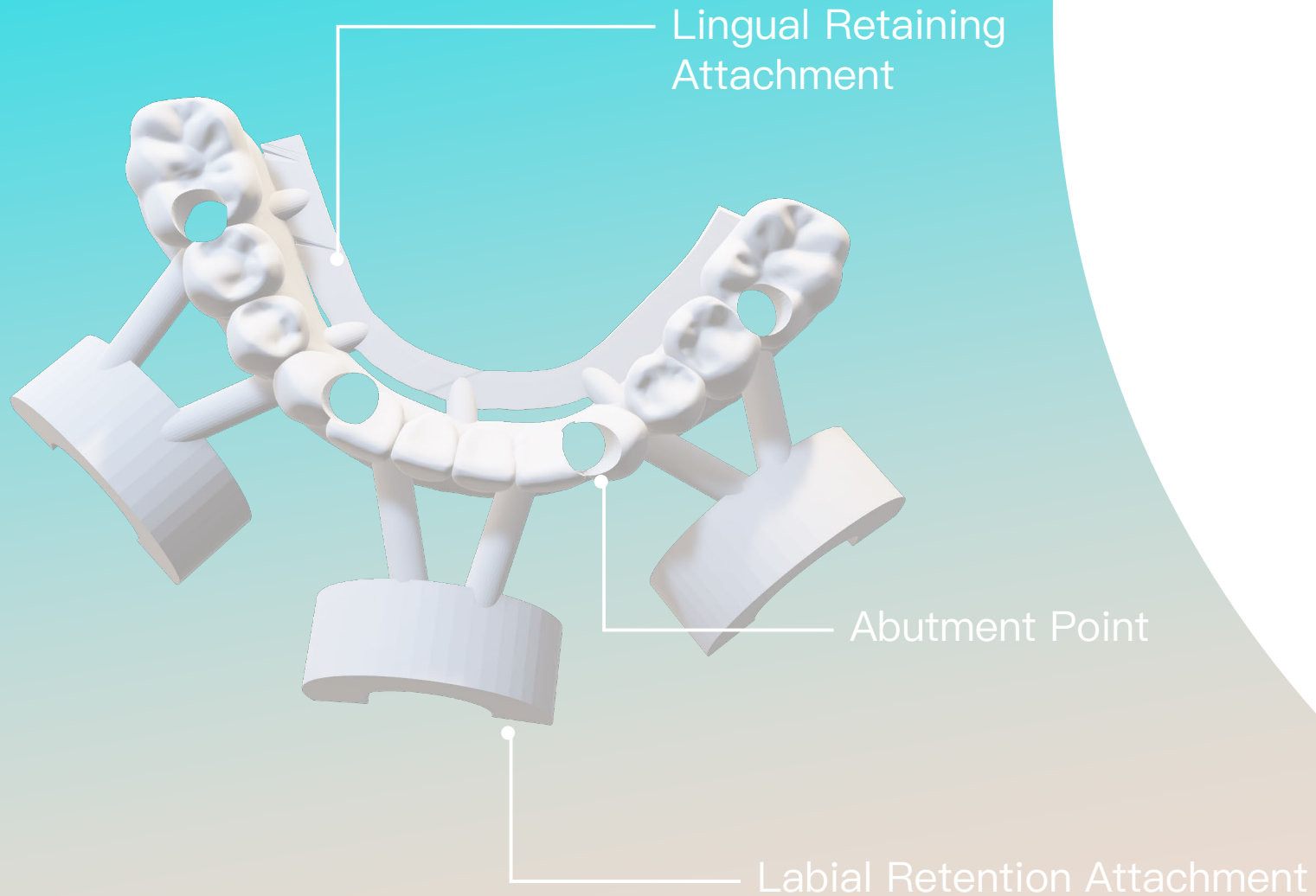
## OSTEOTOMY GUIDE USAGE

- Bone Support
- Bone & Mucosal Support



## IMPLANT GUIDE

- Implant Surgical Guide
- Improved Heat Dissipation During Surgery



## RESTORATION GUIDE

- PMMA Temporary Restorations
- Accurate Restoration Using Pre-Planned Positions.
- Save Clinical Time



# A Zuga Innovation

## OIR All-On-Four Digital Surgical System



Shorten The Overall  
Treatment Time  
Up To **70%**



Improve The Accuracy  
Of Implant Therapy  
Up To **50%**



Reduce The Difficulty  
Of Surgical Treatment



# OIR<sup>01</sup> Bone Support



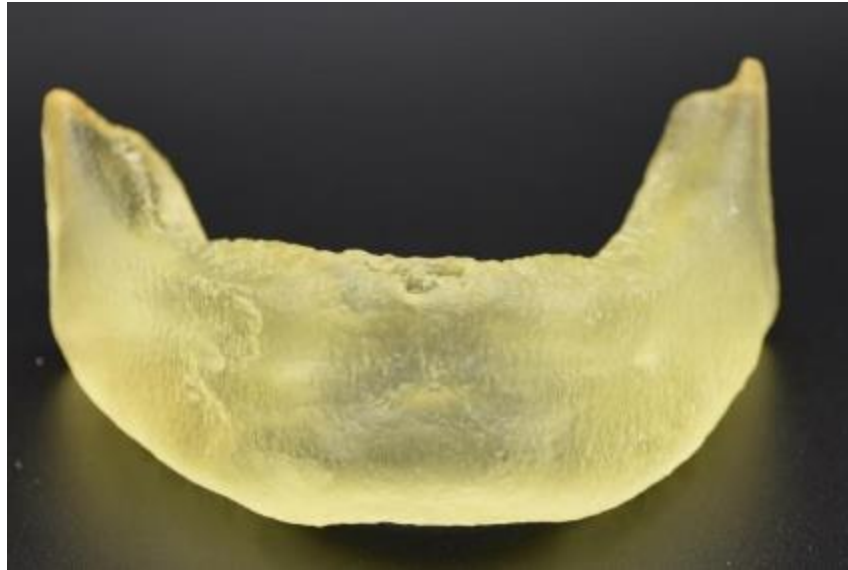
ZUGA MEDICAL



Bone  
Support

---

## Jaws Requiring Osteotomy



- Suitable for cases with **sharp alveolar ridge** or **insufficient jaw spacing**
- Valves and osteotomies are needed





Osteotomy  
Guide



Implant  
Guide



Restoration  
Guide

---

## Osteotomy Guide



- The OIR Osteotomy Guide is used as a reference during the osteotomy
- The OIR Osteotomy Guide provides a reference point for the Implant Guide and Restoration Guide



Osteotomy  
Guide



Implant  
Guide



Restoration  
Guide

---

## Osteotomy Guide Located In the Jaw



- The OIR Osteotomy Guide fits perfectly on the jaw after the jaw flap is reversed



Osteotomy  
Guide



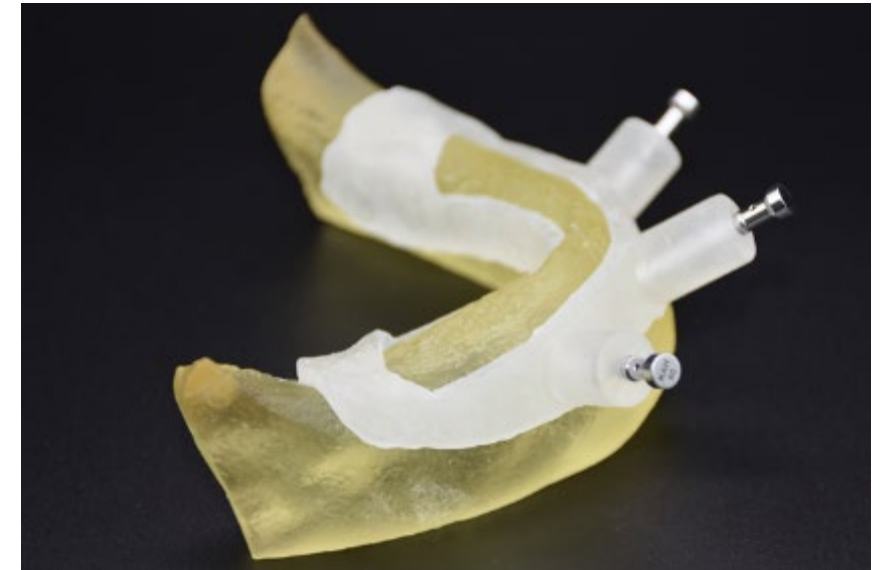
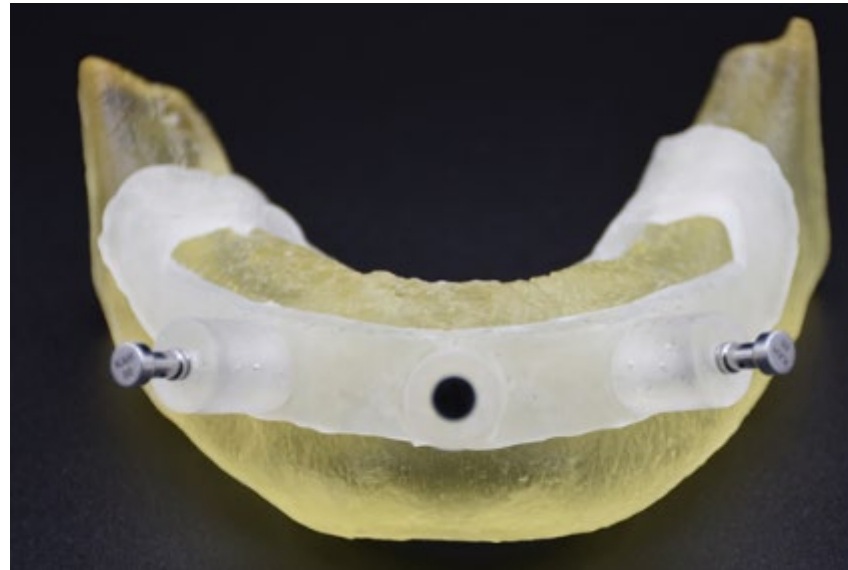
Implant  
Guide



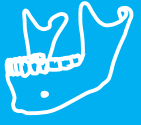
Restoration  
Guide

---

## Put The Anchor Pin Into the Anchor Pin Sleeve



- The OIR Osteotomy Guide is affixed to the jaw using the anchor pin
- The OIR Osteotomy Guide remains in place until surgery is complete



Osteotomy  
Guide



Implant  
Guide



Restoration  
Guide

---

## Osteotomy Guide



- Osteotomy of alveolar bone with reference to the osteotomy plane of the OIR Osteotomy Guide



Osteotomy  
Guide



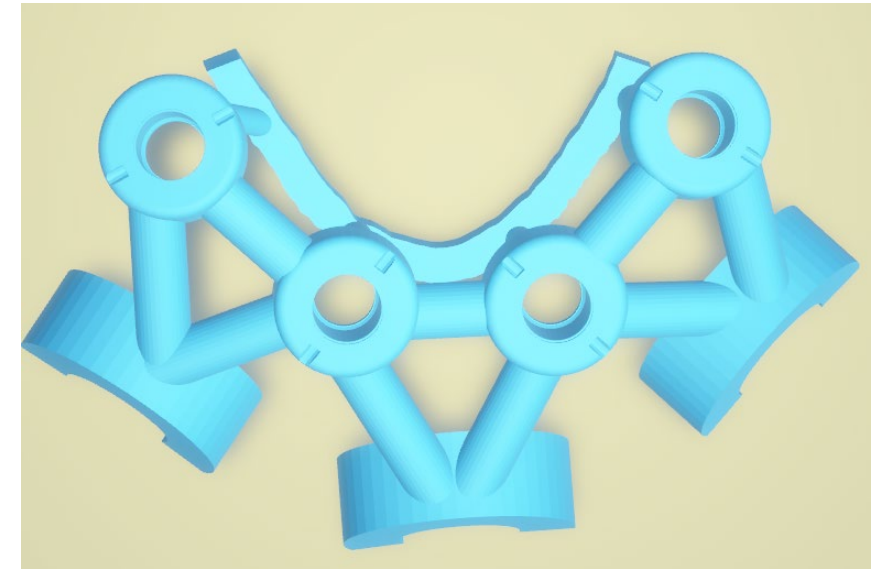
Implant  
Guide



Restoration  
Guide

---

## Implant Guide





Osteotomy  
Guide

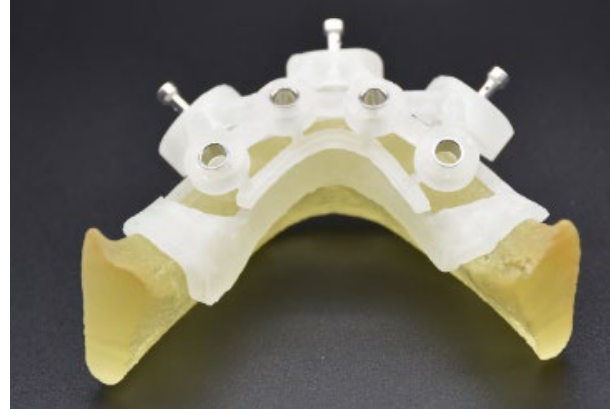
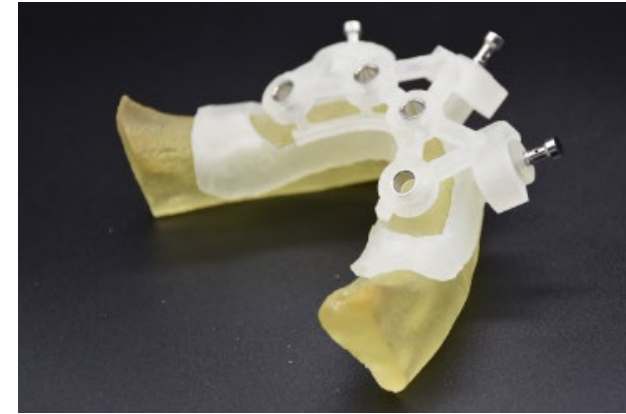


Implant  
Guide



Restoration  
Guide

## Location of OIR Implant Guide On The OIR Osteotomy Guide



- The OIR Implant Guide mates with the OIR Osteotomy Guide
- The OIR Implant Guide is used to guide placement of the implants according to routine implantation procedure.





Osteotomy  
Guide

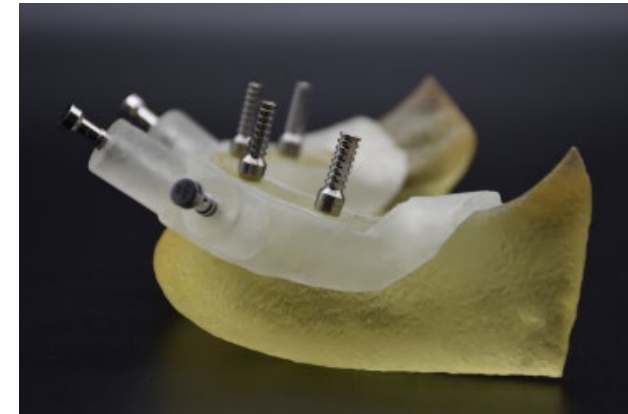
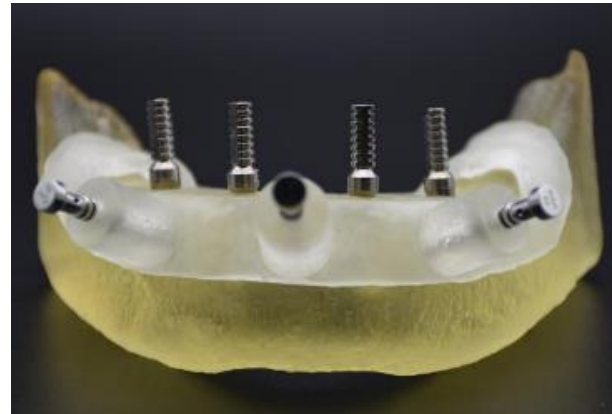


Implant  
Guide



Restoration  
Guide

## Completion Of Implant Surgery



- The OIR Implant Guide is removed after implants are placed and temporary abutments are placed



Osteotomy  
Guide



Implant  
Guide



Restoration  
Guide

---

## Initial Placement Of OIR Restoration Guide



- The OIR Restoration Guide is mated with the OIR Osteotomy Guide.



Osteotomy  
Guide



Implant  
Guide



Restoration  
Guide

---

## Remove OIR Restoration Guide



- Remove the OIR Restoration Guide and temporary abutment
- Grind out unneeded portions of the OIR Restoration Guide leaving only the trimmed OIR Temporary Restoration





Osteotomy  
Guide



Implant  
Guide



Restoration  
Guide

---

## Remove OIR Osteotomy Guide



- Remove the OIR Osteotomy Guide from the jaw



Osteotomy  
Guide



Implant  
Guide



Restoration  
Guide

---

## Final Temp Restoration Without The Abutments Sticking Up







Osteotomy  
Guide



Implant  
Guide



Restoration  
Guide

---

Attach the trimmed OIR Temporary  
Restoration directly to the Implants



- Put on a trimmed temporary restoration



The background of the slide features a close-up of a medical device, possibly a catheter or probe, with a white plastic body and a red, porous sponge-like tip. The device is positioned diagonally across the frame. The text 'OIR 02 Mucosal Support' is overlaid on the image. The 'O' is a large, light blue circle. The 'IR' is in a white, sans-serif font. The '02' is a smaller white number. 'Mucosal Support' is in a white, sans-serif font. At the bottom center, there is a small white and blue horizontal bar above the text 'ZUGA MEDICAL'.

OIR<sup>02</sup> Mucosal Support

ZUGA MEDICAL



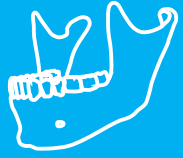
Mucosal  
Support

---

## Make Base Model



- Suitable For Cases Without Osteotomy
- No Flap Needed.



Osteotomy  
Guide



Implant  
Guide



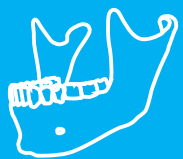
Restoration  
Guide

---

## OIR Osteotomy Guide



- The OIR Base Osteotomy Guide is prepared to fit over the Base Model and to retain the OIR Implant Guide and OIR Restoration Guide



Osteotomy  
Guide



Implant  
Guide



Restoration  
Guide

---

## Place the OIR Base Osteotomy Guide on the Base Model



- Affix the OIR Base Osteotomy Guide to the Base Model
- The OIR Base Osteotomy Guide is worn until surgery is complete



Osteotomy  
Guide



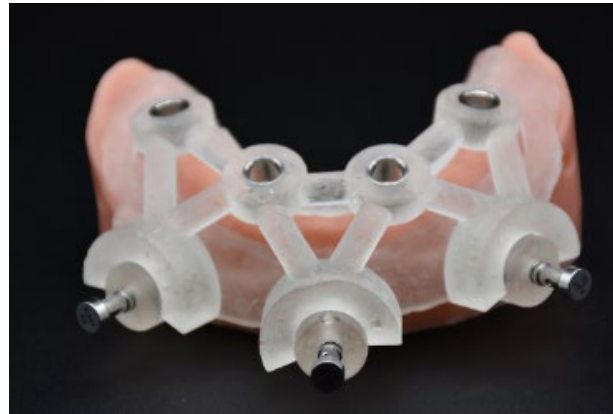
Implant  
Guide



Restoration  
Guide

---

## Location of OIR Implant Guide On The OIR Base Osteotomy Guide



- The OIR Implant Guide is mated with the OIR Base Osteotomy Guide.
- The implants are placed using the OIR Implant Guide according to routine implantation procedure.





Osteotomy  
Guide



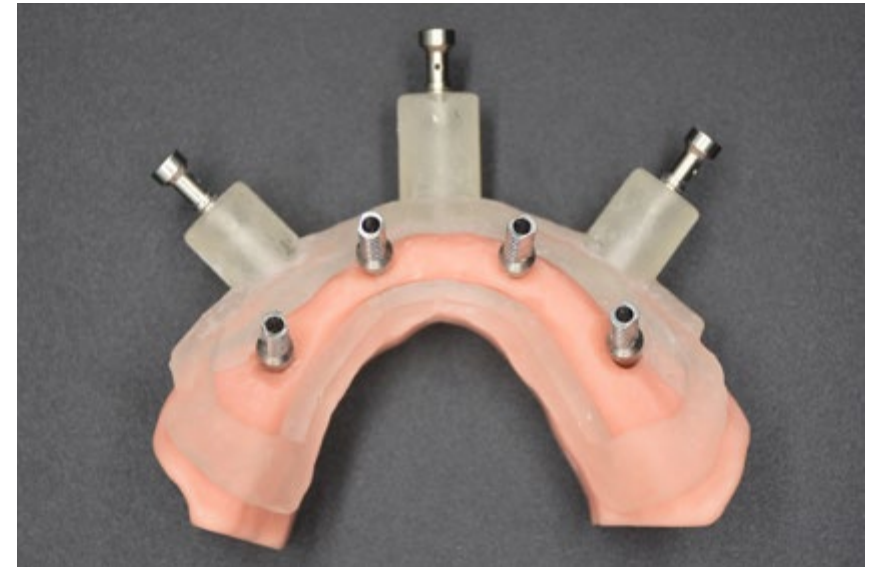
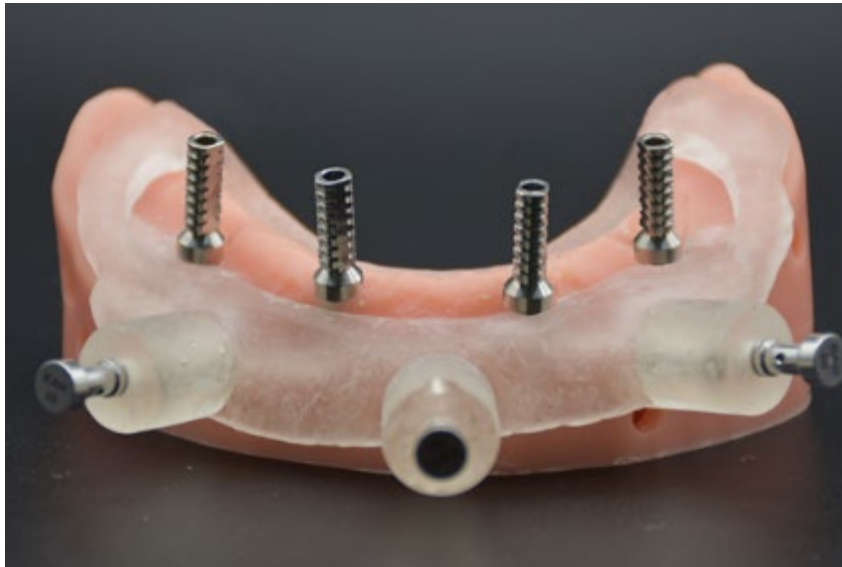
Implant  
Guide



Restoration  
Guide

---

## Remove the OIR Base Osteotomy Guide



- The OIR Implant Guide is removed after implants are placed and temporary abutments are placed





Osteotomy  
Guide



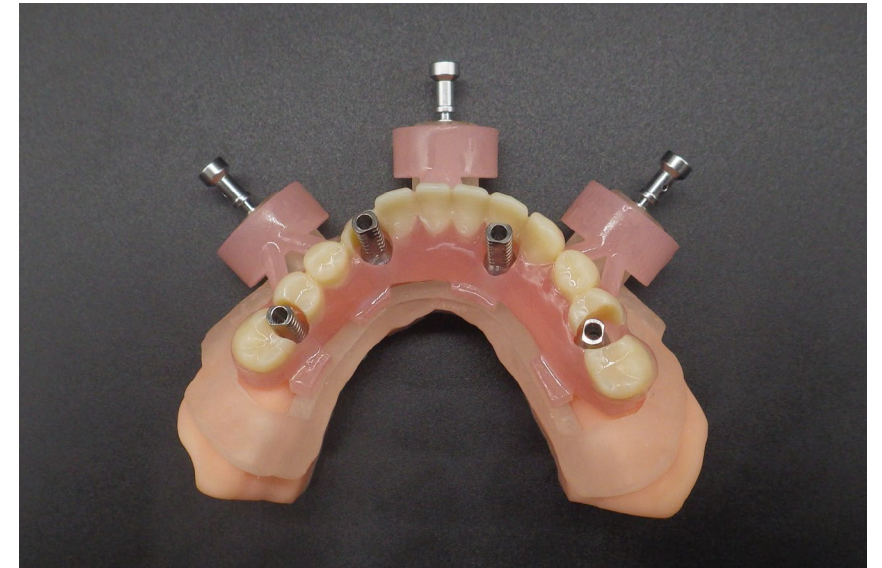
Implant  
Guide



Restoration  
Guide

---

## Restoration Guide For Trial Wear



- Mate the OIR Restoration Guide with the OIR Base Osteotomy Guide.



Osteotomy  
Guide



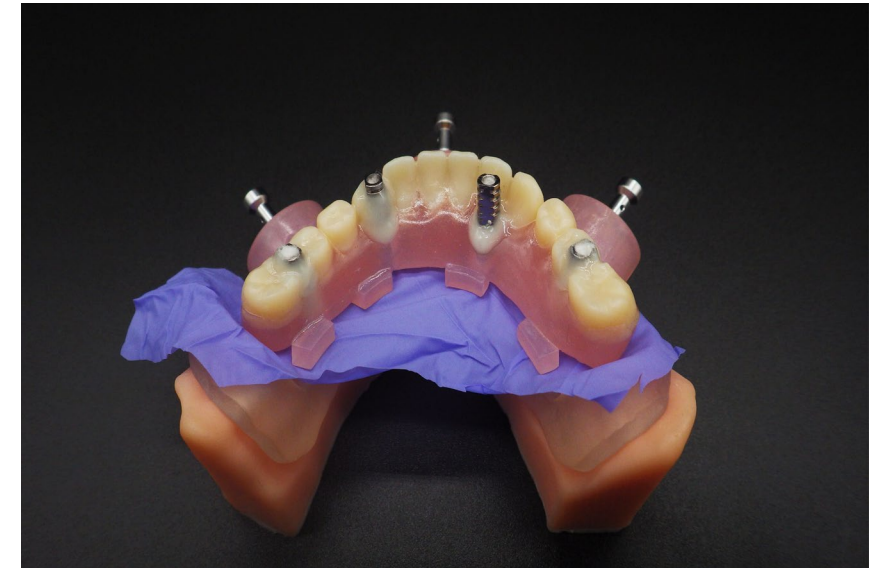
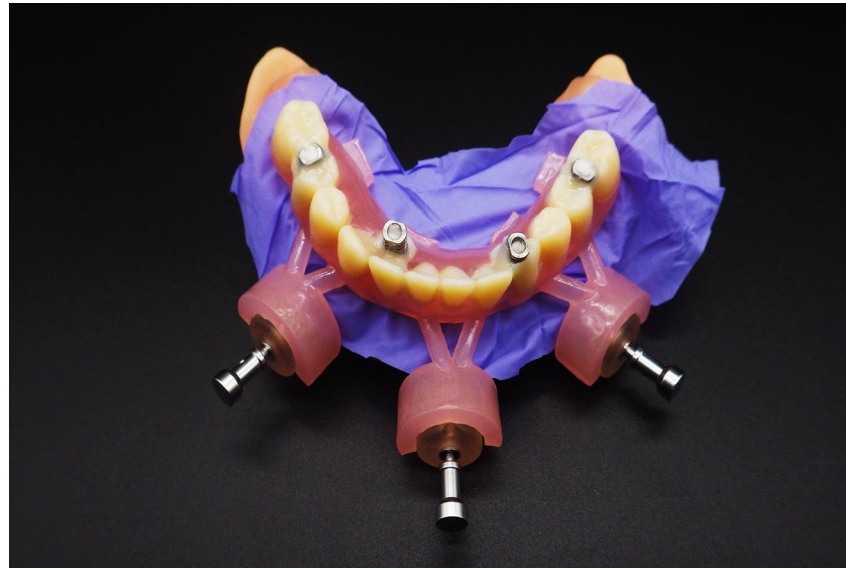
Implant  
Guide



Restoration  
Guide

---

## Bonding the OIR Restoration Guide



- Place the rubber barrier under the OIR Temporary Restoration, close the holes and bond the pieces together.



Osteotomy  
Guide



Implant  
Guide



Restoration  
Guide

---

## Remove Restoration Guide and OIR Osteotomy Guide



- Remove the restoration guide with the temporary abutment
- Grinding out redundant accessories
- Remove the OIR Osteotomy Guide





Osteotomy  
Guide



Implant  
Guide



Restoration  
Guide

---

## Remove OIR Osteotomy Guide



- Remove the OIR OIR Osteotomy Guide from the jaw





Osteotomy  
Guide



Implant  
Guide



Restoration  
Guide

---

## Final Temp Restoration Without The Abutments Sticking Up





Osteotomy  
Guide



Implant  
Guide



Restoration  
Guide

---

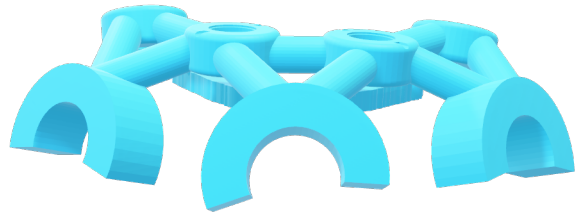
Attach the trimmed OIR Temporary  
Restoration directly to the Implants



- Put on a trimmed temporary restoration



1. Restoration Guide



2. Implant Guide



3. Osteotomy Guide



01

Bone Support

02

Mucosal Support

03

Tooth Support



# THANK YOU

Simple Implant Solutions For The Modern Dentist

